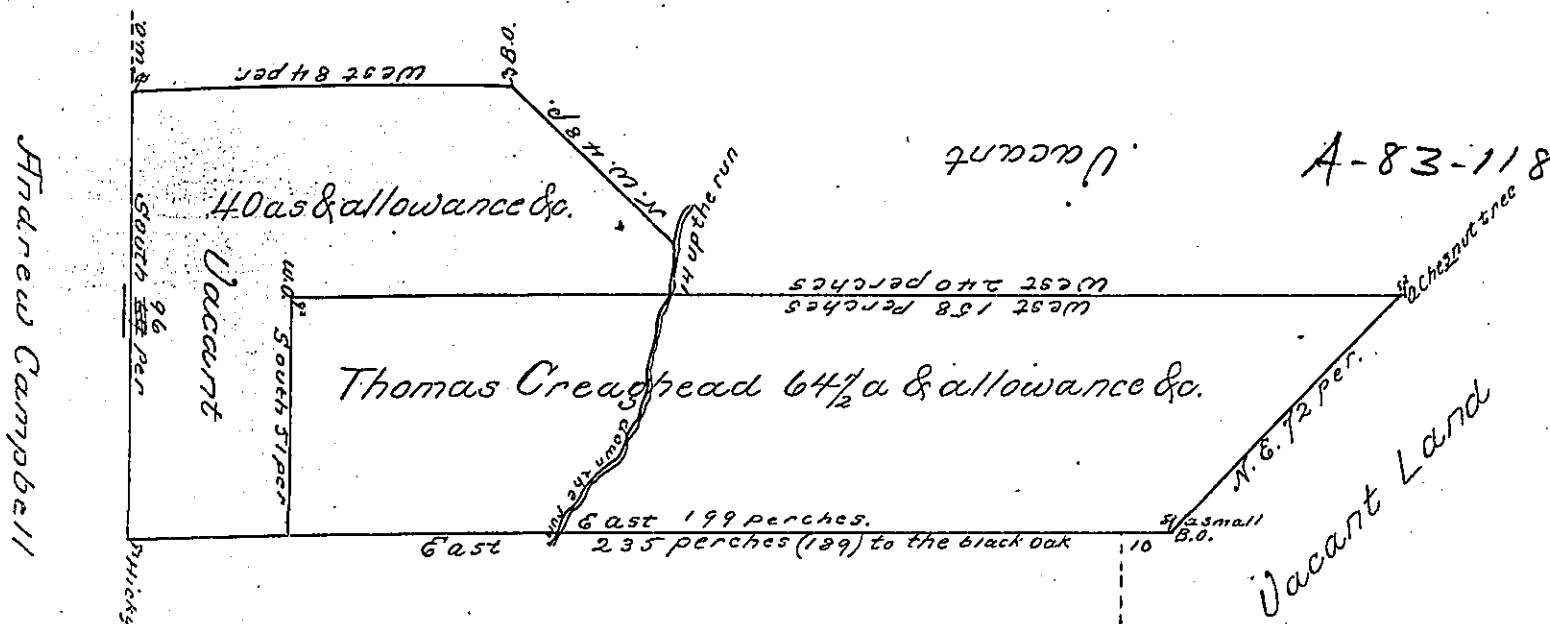


John Campbell A-75-248



At Settlement late of William Clark decd.

A-64-210

A Draught of a Tract of Land situate in the Township of Salisbury in the County of Lancaster containing 64 1/2 a & Allowance &c. Surveyed to Thomas Creaghead on the 28th of December 1733 In pursuance of a Warrt. from the propes. for 200 a. dated the 21st. of the same month.

Benja. Eastburn.

Since the survey aforesd. the sd. Thos. Creaghead made a settlement on the above Land wh. he has since granted to his son John, at whose request I wrote to Saml. Lightfoot on the 29th. of June 1738 to enlarge the quantity aforesd. on the north side & West end. if not already improved or surveyed by Warrt. to some other person In pursuance whereof he surveyed on the 14th. of Augt. 1739 forty acres as above laid down. But the sd. Thos. Creaghead not complying with the terms of the Warrt. aforesd. the same as also the survey became void, and another Warrt. was issued on the 12th. of Feby. 1739 to Return the same for the use of John Creaghead -

Returned &c. ye same day.

IN TESTIMONY that the above is a copy of the original remaining on file in the Department of Internal Affairs of Pennsylvania, made conformably to an Act of Assembly approved the 16th day of February, 1833; I have hereunto set my Hand and caused the Seal of said Department to be affixed at Harrisburg, this third day of April 1900

James W. Latta
Secretary of Internal Affairs.

